



LMS Lower Secondary Visits



# Kennedy

• SpaceCenter •



Atlantis

Space Shuttle Overnight  
& Exhibit



# Reaching Beyond the Classroom

This year, our Lower Secondary students traveled to the Kennedy Space Center Visitor Complex for an immersive overnight learning experience that brought science, innovation, and human collaboration to life.



More than a field trip, the experience invited students to step into the story of exploration itself — to imagine what it means for humanity to work together in pursuit of discovery, progress, and possibility.

From interactive exhibits and simulated launch experiences to hands-on scientific demonstrations, students explored the legacy of space exploration while engaging with the technologies and ideas shaping the future.



**“We are all explorers by nature.”**

**— Carl Sagan**



# A Montessori Approach to STEM

Montessori education encourages adolescents to move beyond passive learning and into meaningful engagement with the world around them. Experiences like Kennedy Space Center allow students to encounter science not as isolated facts, but as interconnected human endeavors requiring creativity, perseverance, collaboration, and critical thinking.



Throughout the trip, students explored:

- engineering and space technology
- scientific innovation
- environmental and planetary systems
- teamwork and communication
- the relationship between science and human progress

As adolescents begin asking larger questions about their place in the world, these experiences help frame STEM education within a broader context of responsibility, inquiry, and global citizenship.

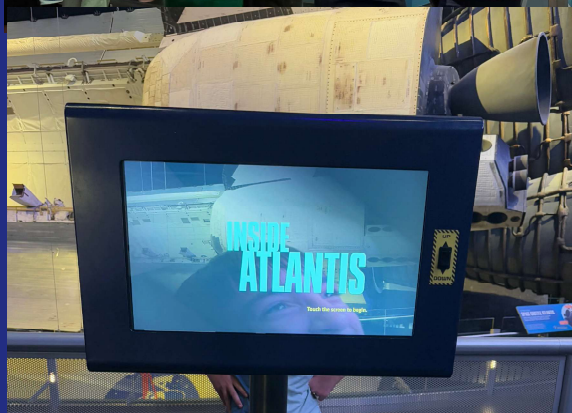


# Space Shuttle Atlantis®

One of the most memorable moments of the trip was exploring the Space Shuttle Atlantis exhibit, where students spent the night sleeping under the real orbiter suspended overhead as if still in orbit.

The exhibit offered students an opportunity to examine what it was like to live and work in space while learning about decades of innovation, international cooperation, and scientific advancement.

Interactive exhibits throughout the experience encouraged curiosity, problem-solving, and imaginative thinking — all central components of Montessori adolescent education.



“The important thing is to never stop questioning.”

— Albert Einstein



# Experiencing a Launch



Students also participated in the Shuttle Launch Experience®, which simulated the sights, sounds, and sensations of liftoff into space.

For many students, the experience transformed abstract scientific concepts into something tangible and memorable. Moments like these help bridge classroom learning with lived experience, allowing adolescents to connect emotionally and intellectually to scientific exploration.



# Preparing Students for a Changing World

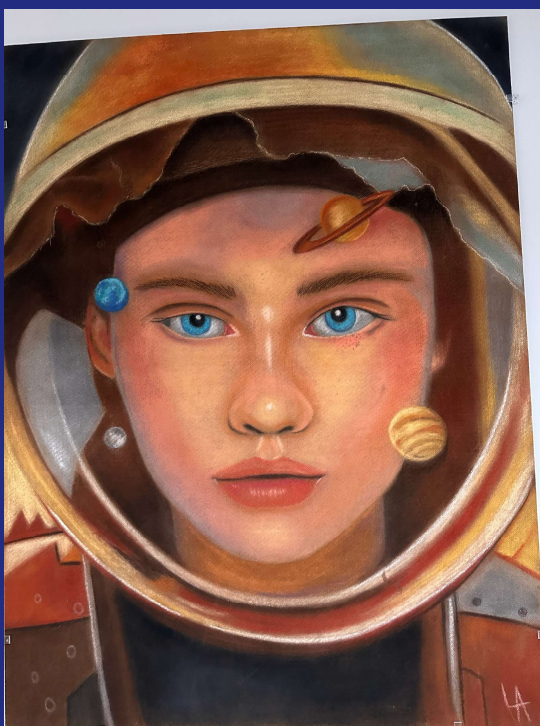
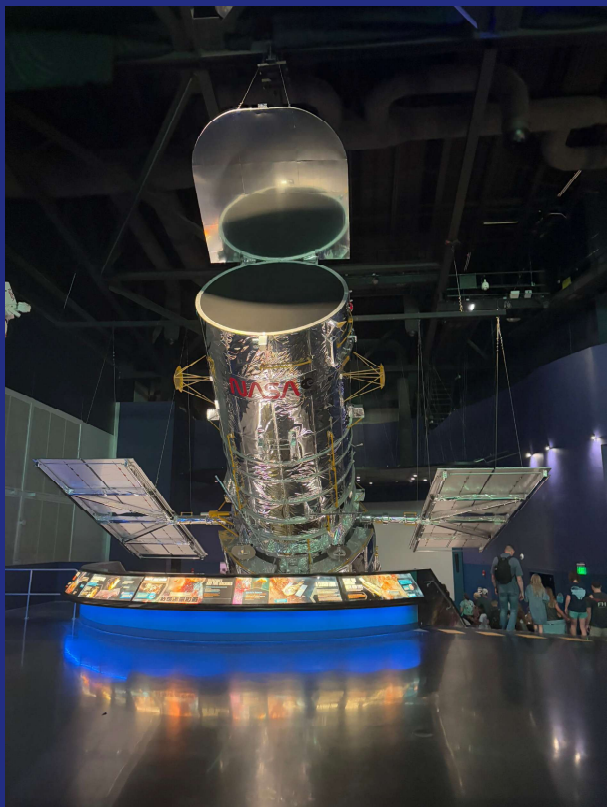
Today's adolescents are inheriting a rapidly changing world shaped by technological advancement, environmental challenges, and increasing global interconnectedness.

At LMS, we believe students benefit from opportunities that inspire both curiosity and responsibility — experiences that encourage them to think critically, collaborate meaningfully, and imagine solutions for the future.

Our annual Kennedy Space Center experience is designed to do exactly that: connect Montessori principles with real-world exploration while nurturing the next generation of thinkers, innovators, and problem-solvers.



Montessori education prepares adolescents not only to understand the world, but to participate meaningfully in shaping its future.



# An Annual Montessori LMS Tradition



LANIAKEA

This year marked the beginning of what will become an annual upper secondary field study experience at the Kennedy Space Center and Astronaut Training Experience.

For Montessori adolescents, meaningful work must connect to the real world. Experiences like these invite students to move beyond textbooks and into environments where collaboration, innovation, engineering, and global problem-solving come to life.

As our students explored the future of space travel, climate research, robotics, and international cooperation, they were reminded that scientific progress depends not only on knowledge, but on communication, adaptability, and shared responsibility.

Our adolescents are inheriting a rapidly changing world. Montessori education prepares them not only to understand that world, but to contribute to it thoughtfully, creatively, and collaboratively.

We are grateful to continue building experiences that connect STEM education with human potential, global citizenship, and purposeful work



The future  
belongs to  
those who learn  
to collaborate  
across  
disciplines,  
cultures, and  
ideas.

photos from Artemis Crew